

## PVC Fume Cupboards and PVC Fans

### F U M E C U P B O A R D S

Maskell Productions have been manufacturing fume cupboards\* for over twenty years. This experience in addition to full back up from qualified engineers in the corrosion field is applied to every fume cupboard manufactured and installed by Maskell Productions.

Fume cupboards are normally manufactured in cream PVC sheet and all seams are fully welded. All fume cupboard series come in a range of sizes. These are:



Size	Width	Depth	Height
3	900	750	1500
4	1200	750	1500
5	1500	750	1500
6	1800	750	1500

Other sizes can be built to a customer's specification.

A range of gas, compressed air, power and water outlets including sinks and drip cups can be fitted to all the fume cupboards.

#### MU

The utility series is the base model. It is a rigid PVC cabinet manufactured either in cream or grey. There is an acrylic sliding door and the floor is lined with a choice of materials.

#### MST

The Labsafe fume cupboards\* fully meet NZS7203:1992 and NZS6101:Part 3:1991. Its features include an emergency stop, a purge cycle on start up, a 20 minute rundown period on turning the cupboard off and automatic shut down in the event of a ventilation failure. The fume cupboard has a fluorescent light which shines through a clear panel on the roof, a sink and water outlet. Electrical appliances can be plugged into the double power point mounted in the pillar. The door can be either toughened glass or acrylic and the floor can be made in Glasal, Corian, stainless steel or polyester resin. A removable baffle is manufactured for each fume cupboard to ensure an even face velocity across the front of the fume cupboard.



MASKELL PRODUCTIONS LIMITED.

24 Bowden Road, Mt. Wellington, PO Box 11-185, Auckland 5, New Zealand.

Phone +64-9-573-0548, Fax +64-9-573-0666.

Email: don@maskell.co.nz Website: www.maskell.co.nz



## PVC Fume Cupboards and PVC Fans

### F U M E C U P B O A R D S

#### MCP

For perchloric acid operations, this fume cupboard meets the requirements of NZS7203:1002 fully, with special consideration given to Appendix B3. It has a rear wash down boom to wash behind the baffle and a hand spray wand. The workshop can either be a toughened glass removable panel on a sloping base or Corian, a chemically

inert base material. With all perchloric acid cupboards a scrubber is electrically linked to the cupboard, so that a wash cycle in the scrubber is activated when the fume cupboard is started.

To provide maximum protection and ease of use the following systems can be built into the Labsafe and Perchloric fume cupboards.

**Display System** - this is a LCD display controlled by a microprocessor. The display tells the operator which mode the fume cupboard is in and when it is in the purge or post purge mode a timer will count down the time left before moving to the next mode. An added option is a heat sensor to shut down the gas and electricity supplies and activate the alarm in the event of overheating within the fume cupboard.

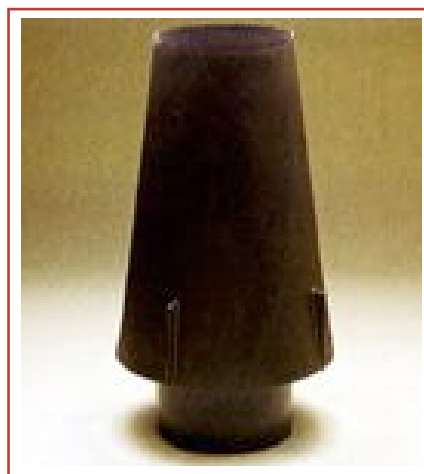
**Bypass System** - this system prevents excessive air flow when the fume cupboard door is closed. Air passes through a grille above the door which closes as the door is raised.

This provides an even flow rate at all door openings. If the fume cupboard is installed in an air conditioned laboratory there are various other options available to reduce the load on the air conditioning system while maintaining the necessary air flow through the fume cupboard. To discuss these options contact the Maskell Production engineers.

### F A N S

Maskell Productions offers a large range of both PVC and Fibreglass fans. The range includes axial and centrifugal fans available in diameters from 250 to 1500 mm. Most fans for fume cupboard use are fabricated from PVC.

Our axial fans are constructed so that the air flow is bifurcated around a sealed pod containing the in-line direct drive motor which draws its cooling air from outside.



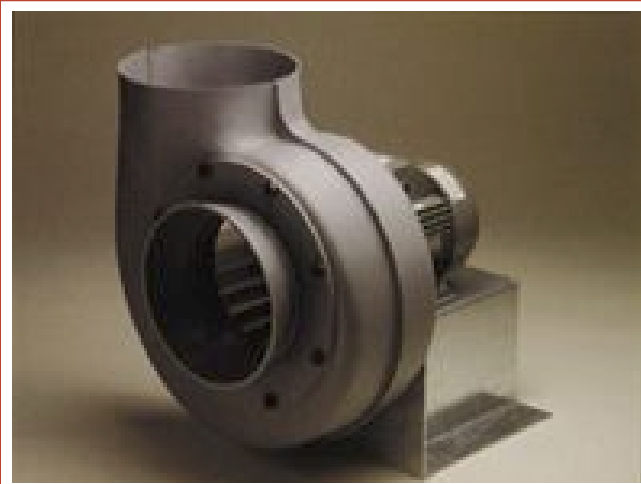
## PVC Fume Cupboards and PVC Fans

## F A N S

**Axial Fans**

Maskell Productions offers a range of three standard PVC bifurcated axial fans. The three standard fans are the AX10, AX12\* and AX15. These fans can be modified with reducers to suit a range of duct sizes.

Their bifurcated construction means that the motor is not subjected to corrosion from the fumes in the duct. This gives the fan a long working life without maintenance. Larger axial fans (450 to 1500 mm diameter) are constructed in fibreglass and are belt driven from an externally mounted motor.

**Centrifugal Fans**

Two sizes of centrifugal fans are manufactured in PVC. These are designated as the UT9 and UT12.\* Both the casing and rotor are constructed from PVC. They can be either direct driven or belt driven\* by a range of different motors, both single phase and three phase.

Fibreglass centrifugal fans with diameters ranging from 150 to 1500 mm are made in three separate series to cover the widest range of requirements.

More detail and data is available on request on all these axial and centrifugal fume handling fans.

